

Temperature Test Unit Quick-Cal

- Fast
- Compact
- Two models -12°C to 350°C

Isotech's Quick Cal range of testers are ideally suited to the less exacting applications where our larger, better specified baths are unnecessary.

The Low Temperature Quick Cal covers the temperature range of -12°C to +140°C, making it ideal for the medical, sterilisation and food industries.

The High Temperature Quick Cal covers the temperature range from 30°C to 350°C.

Both have interchangeable inserts, so you don't have to buy another calibrator each time you find a new diameter sensor to calibrate. The Low Temperature Quick Cal is particularly exciting since it can work from a small 12 volt battery, making it truly portable, alternatively a mains supply is available with 100V - 240V, 50/60Hz input.

The Low Temperature Quick Cal comes complete with two inserts, one blank and one drilled 6.8mm diameter 120mm deep. Alternatively we can provide pre-drilled inserts to suit your needs. Each calibration well is 13mm diameter and 120mm deep.

The High Temperature Quick Cal has a single larger well and interchangeable inserts, 25mm in diameter by 120mm deep. Blank and other special drillings are available to order. The High Temperature Quick Cal is supplied 100-130 or 200-250V AC, 50/60Hz.

The manual which accompanies the Quick Cal contains helpful advice on how to get the best from your calibrator. Accessories for the above include a carry case, alternative inserts and a rechargeable battery for the Low Temperature Quick Cal.



Quick-Cal Low



Quick-Cal High

Specification	
Model	Low Temperature Quick-Cal
Temperature Range	-12°C to +140°C In an ambient of 20°C The Quick-Cal will achieve lower temperature if used in a lower ambient temperature
Set Point Resolution	0.1°C over range
Accuracy	±0.1 to ±0.4°C using Comparison Techniques ±0.4°C against display temperature with a single probe in the 6.8mm drilled sleeve
Stability	±0.05°C
Time to Set Point	9 minutes from 0°C to 100°C
Additional Time for best stability	Typically 5 minutes
Calibration volume	Two 13mm diameter pockets 120mm deep. Supplied with two sleeves, one blank and one drilled 6.8mm diameter 120mm deep
Voltage	15Vdc or 100-240V, Switch mode power supply (50 / 60 Hz)
Power	70 Watts
Dimensions	Height 65mm Width 152mm Depth 175mm Weight 1.5kg

Specification	
Model	High Temperature Quick-Cal
Temperature Range	+30°C to +350°C In an ambient of 20°C
Set Point Resolution	0.1°C over range
Accuracy	±0.1 to ±0.4°C using Comparison Techniques <100°C ±0.4°C against display temperature with a single probe in the 4.5mm pocket >100°C ±1.5°C against display temperature with a single probe in the 4.5mm pocket
Stability	±0.05°C
Time to Set Point	9 minutes from Ambient to 350°C
Additional Time for best stability	Typically 5 minutes
Calibration volume	25mm diameter 120mm deep Supplied with insert, 5 pockets, 8mm, 6.5mm, 6.5mm, 4.5mm, 4.5mm, all 115mm deep
Voltage	100-130V or 200-240V, (50 / 60 Hz)
Power	350 Watts
Dimensions	Height 65mm Width 152mm Depth 175mm Weight 1.5kg

How To Order

Specify Model, Low or High Temp, Supply Voltage, Accessories and if UKAS Calibration is required.



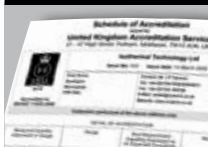
Extra Sleeves

- 560-06-01A** Standard Sleeve
- 560-06-01B** Blank Sleeve
- 560-06-01C** Special Sleeve (maximum bore 10mm)



Carrying Case

931-22-100



UKAS Calibration

UKAS Calibration available to order, legally traceable in more than 70 countries.



Fahrenheit Operation

Unit can be supplied for °F Operation



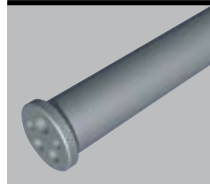
Rechargeable Battery & Charger

Battery is 12V 12Ah.

On full charge battery: 60 minutes when cooling, 90 minutes when heating

Longer life available with larger batteries - consult Isotech

Temperature Range is -10°C to 123°C with battery operation



Extra Inserts

- 550-06-01A** Standard Insert
- 550-06-01B** Blank Insert
- 550-06-01C** Special Insert



Carrying Case

931-22-100



UKAS Calibration

UKAS Calibration available to order, legally traceable in more than 70 countries.



Fahrenheit Operation

Unit can be supplied for °F Operation



Semi Standard Platinum Resistance Thermometer

935-14-98

Note: Also suits Quick-Cal Low-temp